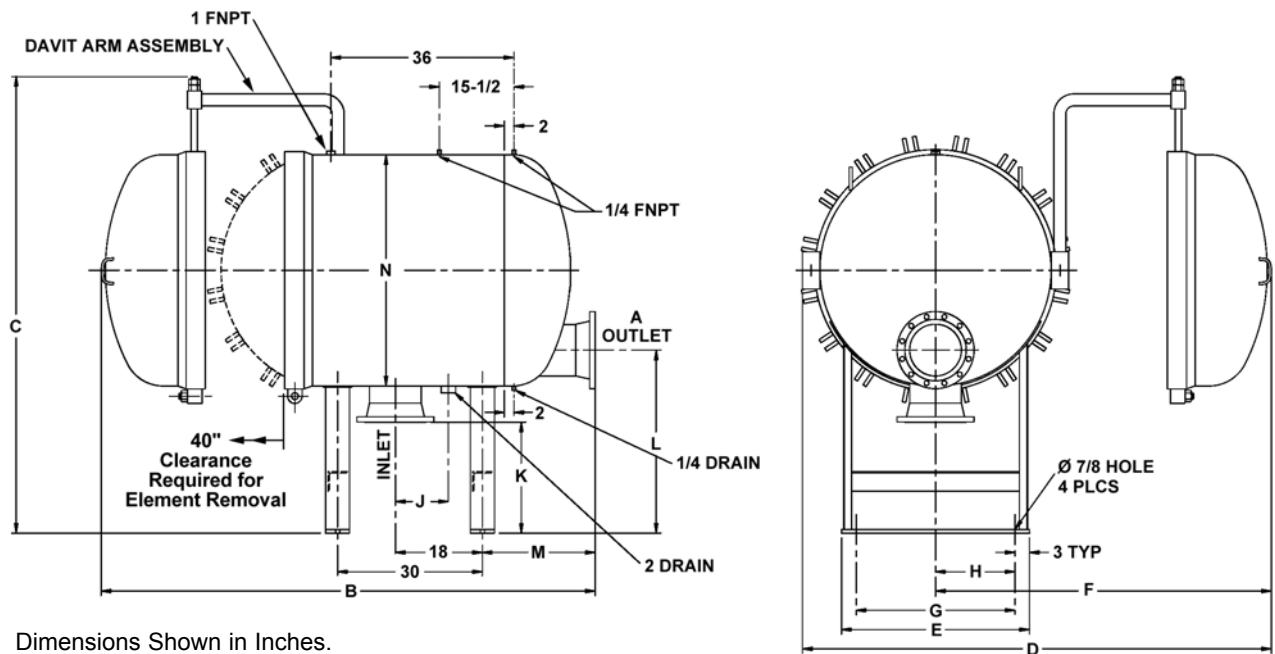


Dimensional Info for High Flow Multi-Cartridge *Horizontal* Housing



No. of Cartridges	A Inlet/Outlet	B	C	D	E	F	G	H	J	K	L	M	N
4	4	64-7/8	44-7/8	38-3/8	14-1/2	26-3/4	8-1/2	4-1/4	9	13	20-1/2	16	18
5	4	65-3/4	49-1/2	40-3/4	16	28-1/2	10	5	9	13	21-1/2	16-1/2	20
7	6	68-3/4	56-7/8	51-7/8	19-1/2	35-3/8	13-1/2	6-3/4	9	16	26	17-1/2	24
11	6	85	65-1/4	70-1/4	24	51-7/8	18	9	9	16	27	21-3/4	30
18	8	87-1/2	75-7/8	79-3/4	29	58-3/4	23	11-1/2	9	20	32	20-1/2	36
21	8	96-7/8	84	92-7/8	34	67-1/8	28	14	9	20	33	22	42
29	10	102-5/8	94-7/8	97-3/8	39	69-3/4	33	16-1/2	11	23	38	23-1/2	48

Construction Notes

Standard Construction Material

Carbon Steel

Sand blasted with painted enamel exterior.

316 Stainless Steel Wetted

Except the following non-wetted parts which are made of Carbon Steel:

- Grey Zinc Plated Bolts and Nuts
- Davit Assembly
- Leg Assembly
- Bolting Lug Assemblies
- Other Construction Materials Available

O-Ring Options

The following O-Ring options are available for the High Flow Multi-Cartridge Vertical Housing:

- Viton (standard)
- PTFE Encapsulated Viton
- Silicone
- Buna
- EPDM
- Other Materials Available

Typical Part Number

M	H	U	11	Q	C	15	W	6	
Bag Series	Vessel Orientation	Material	Number of Elements	Cartridge Length	ASME Code	Pressure Rating	Connection Type	Connection Size	Special Options