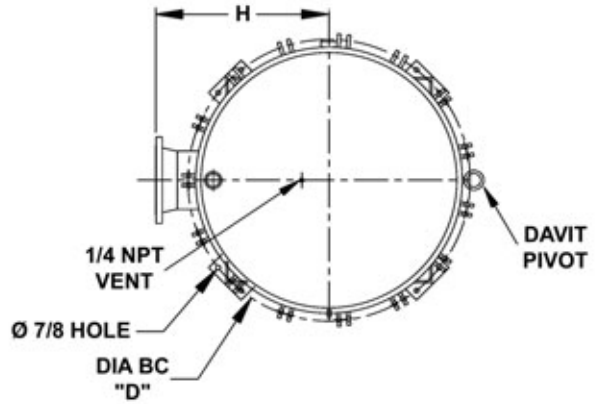
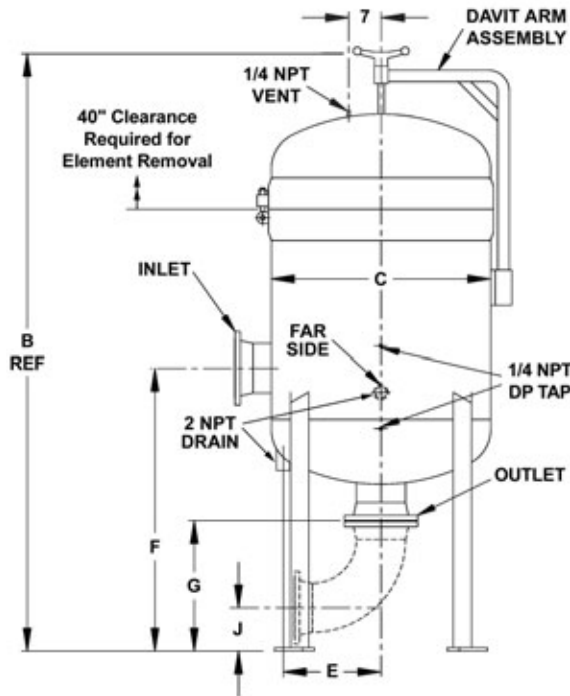




# Dimensional Info for High Flow Multi-Cartridge Vertical Housing



**Maximum Pressure: 150 psi - 10.3 bars**  
**Pressure Tested To: 195 psi - 13.4 bars**  
**Maximum Temperature: 220°F (104°C)**

Dimensions Shown in Inches.

| Number of Cartridges | Inlet/Outlet | B       | C  | D        | E      | F      | G      | H  | J     |
|----------------------|--------------|---------|----|----------|--------|--------|--------|----|-------|
| 4                    | 4 150#       | 78      | 18 | 24       | 6-1/2  | 27-1/2 | 12-1/2 | 13 | 5-1/2 |
| 5                    | 4 150#       | 79-5/8  | 20 | 26       | 7-1/2  | 28-1/2 | 13     | 15 | 6     |
| 7                    | 6 150#       | 84      | 24 | 28       | 9-1/2  | 36-3/4 | 19-1/8 | 17 | 6-1/2 |
| 11                   | 6 150#       | 95-1/8  | 30 | 36       | 12-1/2 | 38-1/8 | 19-1/8 | 21 | 8-1/2 |
| 18                   | 8 150#       | 101-1/8 | 36 | 33-3/4   | 14-3/4 | 46-5/8 | 24-5/8 | 24 | 8-1/2 |
| 21                   | 8 150#       | 116-1/2 | 42 | 45-15/16 | 16-5/8 | 48-3/4 | 24-1/8 | 29 | 8     |
| 29                   | 10 150#      | 127-3/4 | 48 | 52-3/4   | 21-3/8 | 57-1/2 | 28-5/8 | 32 | 9-1/2 |

Due to our continuing program of product improvement, specifications are for reference only and subject to change without notice.

## Construction Notes

### Standard Construction Material

#### Carbon Steel

Sand blasted with painted enamel exterior.

#### 316 Stainless Steel Wetted

Except the following non-wetted parts which are made of Carbon Steel:

- Grey Zinc Plated Bolts and Nuts
- Davit Assembly
- Leg Assembly
- Bolting Lug Assemblies

### O-Ring Options

The following O-Ring options are available for the High Flow Multi-Cartridge Vertical Housings:

- Viton (standard)
- EPDM
- Buna
- PTFE Encapsulated Viton
- PTFE Encapsulated Silicone
- Other Materials by Special Order

## Typical Part Number

| H      | V                  | U        | 11                 | Q                | C         | 15              | W               | 6               | V               |
|--------|--------------------|----------|--------------------|------------------|-----------|-----------------|-----------------|-----------------|-----------------|
| Series | Vessel Orientation | Material | Number of Elements | Cartridge Length | ASME Code | Pressure Rating | Connection Type | Connection Size | O-Ring Material |